

## Information Sheet - Silvertown Works

Riverlinx CJV are working on behalf of Transport for London to construct the Silvertown Tunnel.

### What are we doing?

Our Tunnel Boring Machine (TBM), Jill, has successfully completed the first leg of the tunnel drive under The River Thames to reach our neighbouring site in Greenwich. The update below provides a look back at progress and an overview of some key areas of upcoming work this quarter.

### Tunnelling

The 11.87m diameter TBM completed the 840m of it's 1,100m journey southbound in just three months to reach Greenwich peninsula. Please see the map below highlighting the distance completed to date and fig. 2 from inside the tunnel. Tunnelling will pause for the Christmas period and resume on January 3<sup>rd</sup>, 2023.



Fig.1 TBM distance travelled southbound drive

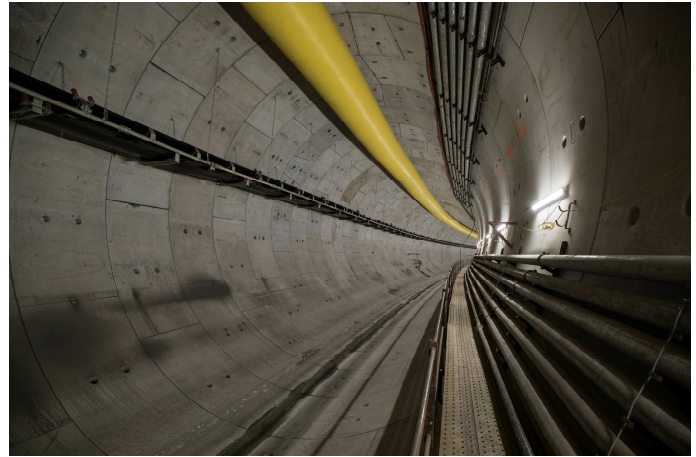


Fig.2 Inside the tunnel

To follow tunnelling progress, please visit [www.riverlinx.co.uk](http://www.riverlinx.co.uk)

### Retrieval chamber

Reinforced concrete structures, such as the capping beam, concrete waler beam and diaphragm slab have been constructed to allow the installation of the props and waler beams to build the TBM retrieval chamber. Three levels of props and beams have now also been installed, (see fig. 3 below), to support the shaft as excavation continues below ground to reach the temporary slab construction at a depth of -21m. Steel fixing to construct the 'tunnel eye' will commence in January 2023. This is the area that our TBM, Jill will break through upon completion of the north bound drive next Summer, having completed her return journey under the river.

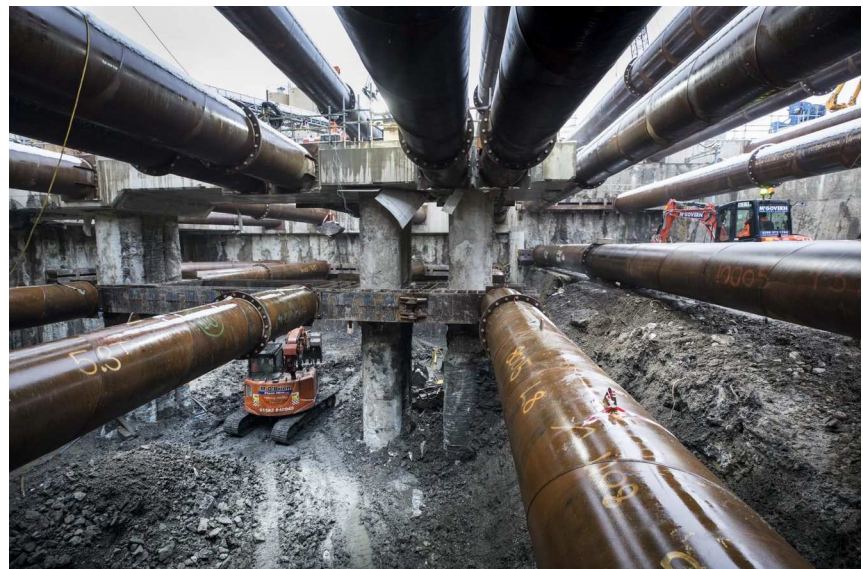
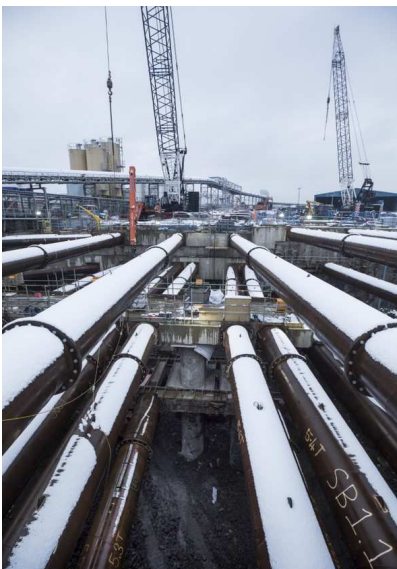


Fig. 3 TBM Retrieval chamber excavation – aerial view and -11.8m below ground

### North Portal service building

The construction of the roof slab, (see images below – red section) upon which the North Portal building will be positioned is 50% complete. The remaining 50% will be built by late January. Excavation to a depth of -15m will commence once the roof slab is completed. Sheet piles will be installed (during core hours) as a retaining wall, along with temporary props to facilitate deeper excavation. This will allow the installation of ‘permanent works’ i.e., the road approaches leading into the new tunnel. Excavation works will take place on both day and night shift with completion expected by late April.

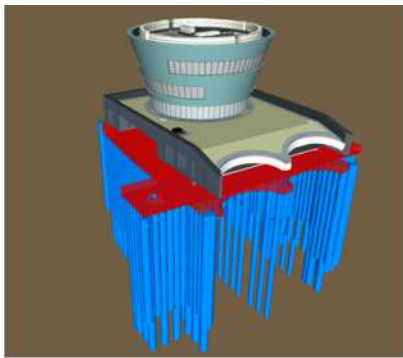


Fig. 4 3D Model image



Fig. 5 Portal Building (digital image)

### Tunnel approach

Piling to construct the covered section of tunnel is almost complete. Due to risk mitigation and proximity to nearby assets, the final three piles will be cast at night during engineering hours. This is expected to complete by the end of January. Excavation works have begun in the tunnel approach section of works and prop installation to dig deeper will begin in February 2023. Works in this area will take place day and night.

### Tunnel approach – river wall

Approximately 180m of new reinforced riverwall have been installed in Silvertown, spanning the length of bay’s 1 and 2. ‘Jill’ passed successfully under bay 1 when her journey begun on 31 August. Demolition works to remove the old sheet pile wall are now complete and end caps have been installed to prevent any water ingress. In the new year, further wall demolition works are planned over a two-week period. Precast wall units will be installed along bay’s 1 and 2 along with the intertidal terrace once ‘Jill’ has journeyed back from Greenwich.

### Lower Lea Crossing – lane closure

We will be reinstalling a lane closure from the second week of January. A pedestrian and cyclist diversion will be in place for approximately 300m along the Lower Lea Crossing from Tidal Basin roundabout. This is to facilitate the construction of the new Tidal Basin Roundabout. This programme of works will include utility diversions involving cabling at night and connection works with hand tools. Traffic Management signs will be in place to advise pedestrians and cyclists on diversion routes. For further details, please visit [www.riverlinx.co.uk/traffic-management](http://www.riverlinx.co.uk/traffic-management)

Our next Community Liaison Group meeting will be held on Monday 23<sup>rd</sup> January at the Britannia Village Hall. If you’d like to join to hear more about project progress and ask any questions to the teams, please get in touch via the Helpdesk contact details shown in the right-hand column.

**TfL Bus route – ‘Have your say’** - The consultation to share your views on the proposed bus network is open until 11 January 2023. For more information or to have your say, visit [www.tfl.gov.uk/silvertown-tunnel-buses](http://www.tfl.gov.uk/silvertown-tunnel-buses)

- **Core hours:** Mondays to Fridays: 08:00 to 18:00; Saturdays: 08:00 to 13:00
- **Extended hours:** Mondays to Fridays: 07:00 to 08:00 and 18:00 to 22:00. Saturdays: 07:00 to 08:00 and/or 13:00 to 19:00
- **River wall extended hours:** Monday to Saturday 04:00 to 08:00 and 18:00 to 22:00. N.B. These hours will only be used if necessary.
- **Piling:** For safety reasons, operations may extend into the night until end of January 2023.
- **Excavation, concreting and steel fixing:** works will extend into the night until May 2023
- **Assembly of TBM:** Operations will continue 24/7

### Any questions?

Please get in touch with our Helpdesk:

Email: [help@riverlinxcjv.co.uk](mailto:help@riverlinxcjv.co.uk)

24/7 Helpdesk: 079 079 784 86

Website: [www.riverlinx.co.uk/news](http://www.riverlinx.co.uk/news)



Follow us on:



[www.linkedin.com/company/riverlinx](http://www.linkedin.com/company/riverlinx)



[www.twitter.com/RiverlinxCJV](http://www.twitter.com/RiverlinxCJV)