

Information Sheet - Silvertown Works

Riverlinx CJV are working on behalf of Transport for London to construct the Silvertown Tunnel.

What are we doing?

Works to construct the Silvertown Tunnel are advancing at pace. The last quarter saw both the arrival of 'Jill' - the Tunnel Boring Machine (TBM) into Greenwich and the subsequent 'breakthrough' into the rotation chamber and the completion of all rotary and sheet piling works at our Silvertown site, including building the perimeter walls for the tunnel approach from Tidal Basin roundabout. The update below provides a look back at this progress and an overview of some key areas of upcoming work this quarter.

Tunnelling

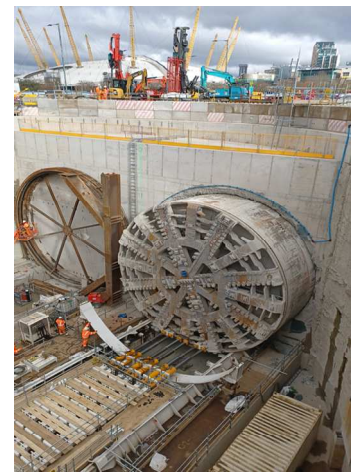
Following the successful completion of the southbound tunnel bore to Greenwich, 'Jill' – the TBM broke through into the rotation chamber in February (see fig. 1 and 2. below). The extremely complex and innovative operation, within a restricted space, has now begun to manoeuvre the 2,300-ton machine (including gantries) using nitrogen cushions. This 180-degree rotation will point 'Jill' in the direction of Silvertown to complete the second bore under the river Thames. To follow tunnelling progress, please visit www.riverlinx.co.uk



Fig.1 Rotation chamber Greenwich – TBM breakthrough overview



Fig.2 & 3. TBM breakthrough – south bound drive



Retrieval chamber and 'cut and cover'

Temporary props and beams continue to be installed in the 'cut and cover' area (the future tunnel entrance) and the retrieval chamber to support deeper excavation. This also allows the base slab to be built and the tunnel facing wall. Excavation in the south bound section of the retrieval chamber is complete and this activity is ongoing in the northbound section where the TBM will be received and where the 'tunnel eye' will also be constructed. The 'tunnel eye' marks the precise location through which TBM 'Jill' will break through upon completion of the 1.1km north bound drive later this Summer.

Blackwall Tunnel (A102) weekend full closure (Southbound)

To facilitate the installation of the new Boord Street bridge across the A102 there will be a full weekend closure of the southbound Blackwall Tunnel **from 10pm on Friday 31 March until 5am on Monday 3 April**. The northbound Blackwall Tunnel will not be affected by this closure, but drivers will be subject to local diversions on Saturday night (from 10pm) while the main bridge span is craned into place over the carriageway. It is advised to seek alternative routes to avoid delays. During this weekend the bus route 108 will be split and will terminate at Canning Town station and North Greenwich. Passengers should use the Jubilee line to complete their journey. Tunnel Avenue from Morden Wharf will also be closed for the full weekend from Friday night to Monday morning.

There is a contingency weekend proposed for the Easter weekend should poor weather conditions result in the bridge installation being unable to go ahead as planned on 31-March – 3 April.

For the latest traffic management updates, please visit

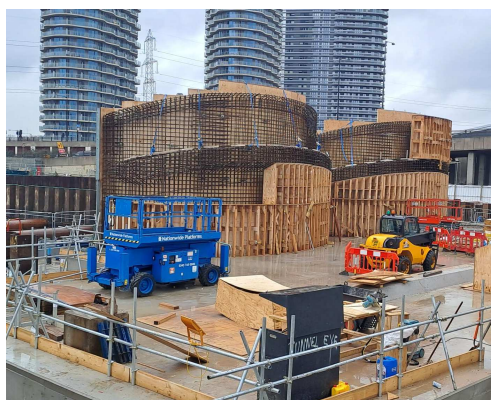
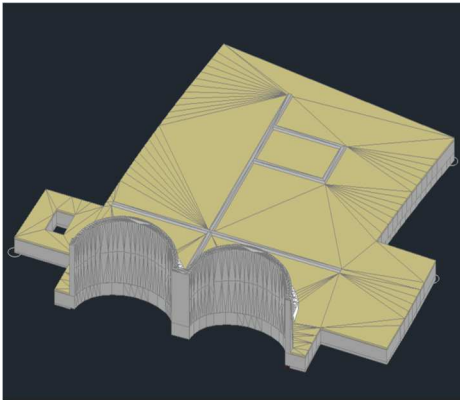
www.riverlinx.co.uk/traffic-management

Tunnel approach – ‘open cut’

The ‘Open Cut’ section will bridge the main gap between the Silvertown Tunnel and the Tidal Basin Roundabout. It will consist of two lanes of traffic each way. Piling to construct the covered section of tunnel is now complete. Excavation works have begun in the tunnel approach area which will take place during the day and night. Elements of reinforced concrete construction are also underway which consist of concrete pours.

North Portal

The North Portal will create the entrance to the tunnel. Please refer to the images below to see the 3D model and the feature tunnel headwall under construction.



Tunnel approach – river wall

Following the completion of both the installation of the reinforced riverwall and the demolition of the old sheet pile wall, the focus in this area of site is to affix end caps in bays 1 and 2 to prevent any water ingress. Precast wall units (new flood defence wall) are currently being installed in both bays which will be followed by capping beam installation later in the year.

Lower Lea Crossing – lane closure

The lane closure in place at Lower Lea Crossing will be maintained until June 2023. Pedestrians and cyclists can continue to follow the diversion for approximately 300m along the Lower Lea Crossing from Tidal Basin roundabout. This is to facilitate the new drainage works for the realigned Tidal Basin roundabout. Traffic Management signs are in place to advise pedestrians and cyclists on diversion routes. Riverlinx continue to clean and maintain this route.

Community Liaison Group meetings (CLG)

CLG meetings are held quarterly to provide an update to the community on project progress and are an opportunity for the public to ask questions directly to the team. If you would like to attend, please get in touch via the Helpdesk contact details shown in the right-hand column. The next meeting will be held on **Tuesday 13 June at 18:00** in the Britannia Village Hall, Evelyn Road. We hope to see you there.

- **Core hours:** Mondays to Fridays: 08:00 to 18:00; Saturdays: 08:00 to 13:00
- **Night shift works:** Mondays to Fridays: 18.00 to 08.00. Saturdays: 08:00 to 13:00 (retrieval chamber, cut and cover and north portal)
- **River wall extended hours:** Monday to Saturday 04:00 to 08:00 and 18:00 to 22:00 N.B. These hours will only be used if necessary.
- **Excavation** works will extend into the night until May 2023
- **Reinforced concrete construction** works below ground will extend into the night (in some areas) until February 2024.
- **TBM works:** Operations will continue 24/7

Any questions?

Please get in touch:

Email: help@riverlinxcjv.co.uk

24/7 Helpdesk: 079 079 784 86

Website: www.riverlinx.co.uk/news



Follow us on:



www.linkedin.com/company/riverlinx



www.twitter.com/RiverlinxCJV