

## INFORMATION SHEET – Greenwich site works

Riverlinx CJV are working on behalf of Transport for London to construct the Silvertown Tunnel.

### What are we doing?

While the tunnel boring machine (TBM) is being assembled for launch on the other side of the river, here in Greenwich, the team continue with the enabling works and the construction of two key structures; the South Portal tunnel entrance and the rotation chamber, where the TBM will be turned around before heading back across the river.

Ground preparation works for the tunnel approach are complete and the same activity will continue in the rotation chamber. Highway's diversions will also take place in the next quarter. Further planned works are detailed below.

### Decked car park works – until end of June

The concrete and steel works to build the one-storey decked car park are now complete. The pedestrian ramp is currently being installed along with four staircases. Timber cladding will be added to complete this segment of works. The car park will be available for use by June / July and will be operated by AnSCO on behalf of the O2 Arena.

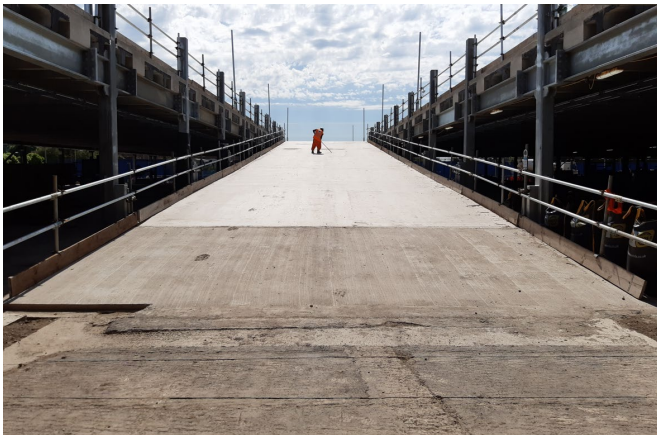


Fig.1 Decked car park vehicular ramp



Fig. 2 Decked car park – top level

### South Portal Construction – ongoing

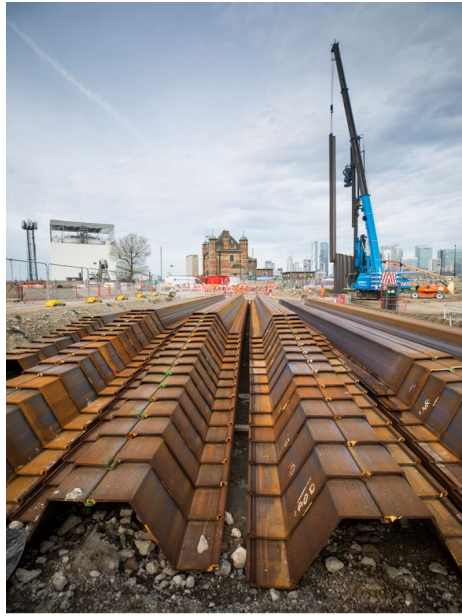
The walls for the new tunnel entrance have now been built. The same piling technique will be applied to form the entrances to the Silvertown Tunnel approach road and to construct the over bridge near the A102. Please note that piling works associated with the overbridge will continue until 22.00 and through the night if required.

### Rotation chamber – ongoing

The installation of the diaphragm wall (underground structural retention wall) is under way to build the rotation chamber foundations. Works include excavation/drilling, installation of steel reinforcement, and concrete pours. To ensure the safety and integrity of each panel, concrete pours will run until 22:00 and through the night if required, as once a pour has begun, it must be completed in one continuous operation.

### Sheet Piling – ongoing

'Sheet piling', the interlocking of steel panels continues to construct the perimeter walls of the tunnel approach. This activity will take place periodically in sequence with other construction activities from July-August and then again from November-February. We will continue to update on the progress of this activity. See the image overleaf.



### Planned traffic management

From 06 June, the Millennium Way Northbound carriageway will reduce to a single lane, just after the O2 arena car park [1]. This is to facilitate a UKPN utility diversion. To minimise the impact, works will be undertaken at the same time as the relocation of the DVSA office along Millennium Way Northbound and Pavilion Lane. Works will continue until October with temporary traffic management signage in place throughout.

There will be full road closures and diversions along Edmund Halley Way in early July for two days in each direction. The diversions will be via Millennium Way, John Harrison Way and West Parkside for each relevant direction. Once dates are confirmed, further details will be published on the traffic management page of the Riverlinx website: [www.riverlinx.co.uk/traffic-management](http://www.riverlinx.co.uk/traffic-management)

Enabling works on the central reserve of the A102 will start on 17 October as part of the phased construction of the new carriageway tie in. There will only be two lanes running both northbound and southbound during a two-week period. Upon completion of these works, the A102 southbound will operate with two lanes open between Boord Street and the off slip to Blackwall Lane, which will be reduced to one lane until June 2023. The northbound carriageway will return to full capacity.

### Community Liaison Group meetings (CLG)

CLG meetings are held quarterly to provide an update to the community on project progress and an opportunity for the public to ask questions directly to the team. If you would like to attend, please get in touch via the Helpdesk contact details shown in the right-hand column. The next meeting will be held in person on Tuesday 14 June at 18:00 and on MS Teams.

### Working Hours

- Core hours: Mondays to Fridays: 08:00 to 18:00; Saturdays: 08:00 to 13:00.
- Extended hours: Mondays to Fridays: 18:00 to 22:00; Saturdays: 13:00 to 22:00 Sundays: 08:00 to 18:00
- Night Shift hours\*: Mondays to Fridays: 22:00 to 08:00

\*Will only be utilised when required.

### What to expect?

- Construction workers and vehicles moving in and around the site
- Some noise and vibration may be experienced during working hours.
- Traffic Management will be in place to indicate any lane closures.

### Any questions?

Please get in touch:

Email:

[help@riverlinxcjv.co.uk](mailto:help@riverlinxcjv.co.uk)

24/7 Helpdesk:

079 079 784 86

Website:

[www.riverlinx.co.uk](http://www.riverlinx.co.uk)



Follow us on:



[www.linkedin.com/company/riverlinx](http://www.linkedin.com/company/riverlinx)



[www.twitter.com/RiverlinxCJV](http://www.twitter.com/RiverlinxCJV)