

INFORMATION SHEET – Greenwich site works

Riverlinx CJV are working on behalf of Transport for London to construct the Silvertown Tunnel. While the tunnel boring machine (TBM) is being assembled for launch on the other side of the river, here in Greenwich, the team continue with the enabling works and the construction of two key structures; the South Portal tunnel entrance and the rotation chamber, where the TBM will be turned around before heading back across the river. This notification is to update you on our progress this quarter in Greenwich and to notify of upcoming activities.

What are we doing?

Ground preparation works are underway to facilitate the construction of the tunnel approaches and permanent works. Highway's diversions will also take place in the next quarter. Further planned works are detailed below.

Millennium Way Northbound closure – March 2022

From 05:00 Friday 18th March until 06:00 Monday 21st March, we will be undertaking road closures. Millennium Way will be closed northbound between Car Park 1 entrance and Edmund Halley Way junction. These closures are for essential utility diversions. Both advanced warning road signs and electronic road signage has been installed and a diversion via John Harrison Way to West Parkside will be in place.

Further details on these works are available on our Riverlinx webpage www.riverlinx.co.uk/news

Utility works

Following the diversion of services, a utility bridge will be built in the South Portal area of site in April. This will enable the transfer of services across the future highway and allow for existing assets to be maintained.

Works to install a dewatering (outfall) pipe from the car park area to Olympian Way continue with more than 70% now complete. Works will continue until April, crossing a section of the Central Park and finishing on the Olympian Way.



Decked car park works – until April

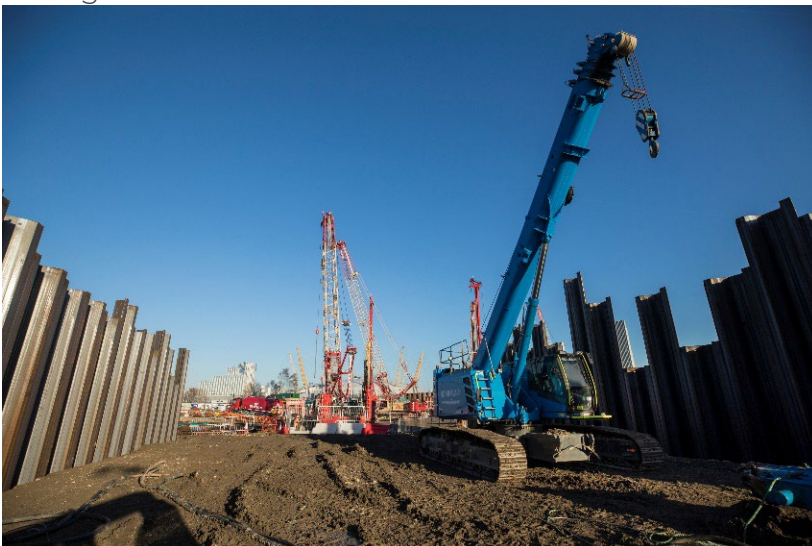
Works are progressing to transform the existing coach park off Millennium Way into a one-storey decked car park. This will be a semi-permanent structure used to replace the existing space the project requires for construction. Following the completion of the foundation piling works, the steel structure is being built to form the frame of the car park. Concrete pours will begin followed by fit out and cladding installation. These works will now take place until 22:00 and through the night when required, (please see the column overleaf). Noise and dust monitoring will be in place at all times.

South Portal Piling works – ongoing until March

In this section, a technique known as ‘Bored Piling’ is ongoing to construct the walls for the new tunnel entrance. The method involves using a cylindrical machine to remove soil which is then filled with reinforced concrete. Once the walls are complete, the same technique will be used to form the entrances to the Silvertown Tunnel approach road and to construct the over bridge near the A102. Please note that piling works associated with the overbridge will continue until 22.00 and through the night if required. See the map overleaf highlighting these activity areas.

Sheet Piling – until May

‘Sheet piling’, the interlocking of steel panels, has begun to construct the perimeter walls of the tunnel approach. See the image below.



Rotation chamber – ongoing

The installation of the diaphragm wall (permanent wall) is under way to build the rotation chamber foundations. Works include installation of steel reinforcement, drilling, and concrete pours. To ensure the safety and integrity of each panel, concrete pours will run until 22:00 and through the night if required, as once a pour has begun, it must be completed in one continuous operation.

Working Hours

- Core hours: Mondays to Fridays: 08:00 to 18:00; Saturdays: 08:00 to 13:00.
- Extended hours: Mondays to Fridays: 18:00 to 22:00; Saturdays: 13:00 to 22:00 Sundays: 08:00 to 18:00
- Night Shift hours*: Mondays to Fridays: 22:00 to 08:00

*Will only be utilised when required.

What to expect?

- Construction workers and vehicles moving in and around the site
- Some noise and vibration may be experienced during working hours.
- Traffic Management will be in place to indicate any lane closures.

Any questions?

Please get in touch:

Email:

help@riverlinxcjv.co.uk

24/7 Helpdesk:

079 079 784 86

Website:

www.riverlinx.co.uk



Follow us on:



www.linkedin.com/company/riverlinx



www.twitter.com/RiverlinxCJV