

## Information Sheet - Silvertown Works

Riverlinx CJV are working on behalf of Transport for London to construct the Silvertown Tunnel.

### What are we doing?

Riverlinx CJV continues to prepare the site from where the tunnel boring machine (TBM) will depart in Spring 2022. The following works are ongoing or starting.

#### Utility works

Utility diversion work is ongoing in Dock Road. Works are expected to complete by Feb 2022. The current trench is to facilitate UKPN work including electricity cable diversions. Gas and telecoms work will follow.

#### Dock Road closure

The permanent closure of Dock Road from Scarab Close is planned to take place on the 27<sup>th</sup> September 2021. Pedestrians will be diverted via Tidal Basin roundabout towards the Crystal Building and the Royal Docks. This is to prepare for the construction of the new alignment of Dock Road and utility diversion work.

#### Piling and excavation work - continuing until the end of November 2021

Progress on key structures advances with some significant engineering feats already achieved in the counterfort piling area to create the launch chamber for the TBM. This activity is due to complete at the end of September. The foundations were built by installing a combination of secant piles (concrete pillars) and counterforts, which comprise six piles that interlock to form a T shape providing stability to the structure. See images below of the reinforcement cage being positioned.

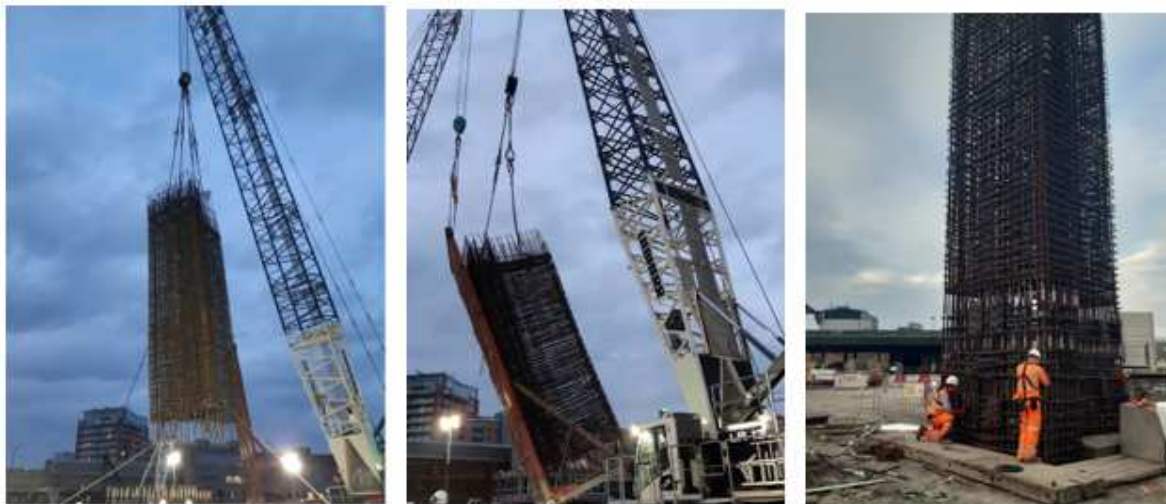


Fig. 1 Part of the counterfort piling sequence – cage

Challenging excavation works are also underway in the launch chamber area to reach a depth of 23m. As excavation progresses deeper below ground level, propping will be required to support and ensure the integrity of the chamber walls. This activity is a continuous operation and may require works to continue into the night.

In addition, rotary piling work continues in other areas of the project to build the tunnel structure and the Retrieval Chamber, where the TBM will be extracted in the future. To ensure the stability of the piles and to prevent concrete blockages, occasionally, works may need to extend into the night to complete this activity. Both piling and excavation works are expected to continue until March 2022.

**River Wall construction - August until the end July 2022**

We have begun the river wall replacement works starting at Dohm Wharf and continuing under the Emirates Airline. This work will be undertaken by installing 260 sheet piles (flat steel segments that interlock to form a wall) to stretch along the 340m riverbank. 80m have been completed so far. See fig. 2. below.

The sheet piling will be undertaken using a vibratory hammer with ‘Variable Moment’ technology to reach the depth of 10m below the foreshore. We are using this technology because compared to more traditional hammers it produces less vibration in the surroundings area.

The new wall will not only strengthen the ground to enable tunnel construction, but also create more flood storage provision for the River Thames. This complies with the Thames Estuary 2100 plan which predicts the water level to rise by 1 metre. The wall will be stepped (as shown in the CGI fig. 3 below), creating an inter tidal terrace, similar in appearance to that of the Greenwich side.

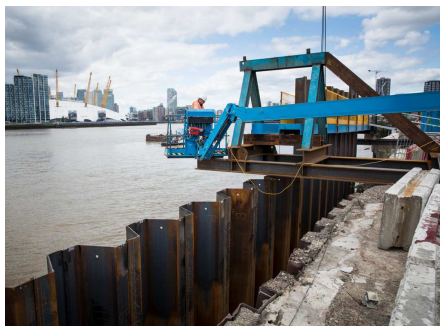


Fig. 2 Installation of sheet piles

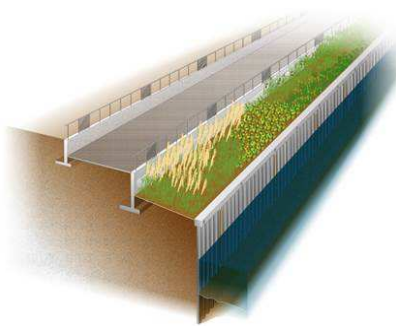


Fig. 3 CGI of the future

**Community Liaison Group (CLG)**

CLG meetings are held quarterly to provide an update to the community on construction progress, how we deliver our works plus job and apprenticeship openings. They are also an opportunity to ask questions directly to the Silvertown Tunnel team on the topics presented.

If you would like to attend, please get in touch via the Helpdesk contact details shown in the right-hand column. The last CLG of the year will be held virtually on 14 December.

- **Core hours:** Mondays to Fridays: 08:00 to 18:00; Saturdays: 08:00 to 13:00.
- **Extended hours:** Mondays to Fridays: 06:00 to 08:00 and 18:00 to 22:00; Saturdays: 06:00 to 08:00 and/or 13:00 to 18:00 subject to approved consent.
- **River wall extended hours:** Monday to Saturday 06:00 to 08:00 and 18:00 to 22:00 N.B. All extended hours will only be used if necessary.
- **Excavation and piling:** Where necessary, operations may extend into the night during the week.

**Virtual Exhibition:**

We are pleased to advise that the Riverlinx website and Virtual Exhibition have now been launched and can be accessed at [www.riverlinx.co.uk](http://www.riverlinx.co.uk) or by using the QR code below.



**Any questions?**

Please get in touch:

**Email:**

[help@riverlinxcjv.co.uk](mailto:help@riverlinxcjv.co.uk)

**24/7 Helpdesk:**

079 079 784 86

**Website:**

[www.riverlinx.co.uk](http://www.riverlinx.co.uk)