

INFORMATION SHEET – Greenwich site works

Riverlinx CJV are working on behalf of Transport for London to construct the Silvertown Tunnel.

What are we doing?

Our Tunnel Boring Machine (TBM), Jill, has completed the tunnel drive north following breakthrough in Silvertown. The operation to disassemble is underway, allowing for the preparation of the cross passages and fit out of the tunnels to commence. Please see the update for the next quarter below.

A102 Southbound Blackwall Lane slip road closure

The slip road from A102 southbound to Millennium Way / Bugsby Way roundabout will be closed and diverted to the next slip road to Woolwich. Please then follow the diversion back to Blackwall Lane.

From midnight, Friday 22 September to Monday 25 September 05:00

Blackwall Tunnel (A102) weekend full closures (southbound)

To facilitate the reconstruction of the existing A102 southbound carriageway there will be two full weekend closures of the southbound Blackwall Tunnel

From midnight, Friday 29 September to Monday 02 October 05:00

From midnight, Friday 06 October to Monday 09 October 05:00

If there are any unexpected issues during these works, contingency days are planned as follows:

Monday 02 October to Saturday 07 October from 23:00 – 05:00 nightworks only

From midnight, Friday 13 October to Monday 16 October 05:00

Once the second closure is completed on 09 October, the A102 Southbound carriageway will be operational over a new bridge that allows the area below to be constructed for the entrance to the Silvertown tunnel.

Please note the A102 northbound traffic will not be affected. However future works in November will affect northbound traffic with final dates for this work to be confirmed. Please visit our website for updates: www.riverlinx.co.uk/traffic-management

Boord Street Pedestrian and Cycle bridge

The temporary ramp is in place on the Boord Street side of the new bridge as the construction of the permanent stairs and ramp continues. This will be completed by the end of 2023. Until completion and due to the space constraints, cyclists are asked to dismount. Wheelchair users will be able to use the temporary ramp. The new permanent structure will be fully accessible when it is completed. We apologise for any inconvenience caused during the construction of the permanent structure.

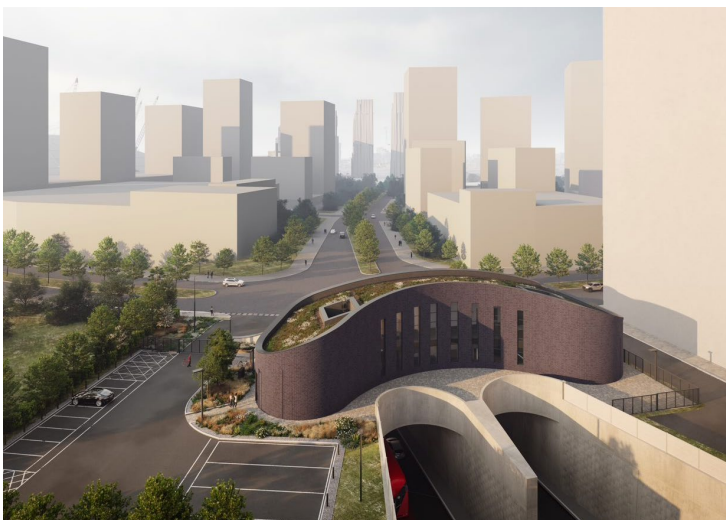


Fig.1 CGI of the South Portal Tunnel approach (above)

Fig.2 Silvertown Tunnel South Portal Tunnel approach – under construction (right)



Rotation Chamber

Following the dismantling of the TBM, the Cut and Cover tunnels which connect the tunnel approach section with the recently bored tunnels, will begin construction in September.

Cut and Cover tunnels

Excavation and propping works in the underground stretch of the Cut and Cover tunnel have finished, see fig.3. Reinforced concrete works have commenced to form the tunnels which will connect with the existing infrastructure as described above.



Fig. 3 Cut and Cover Tunnels

Open Cut – tunnel approach

The sheet piling in the Greenwich site is 90% complete. A small section remains beside the A102 and is scheduled to start in late 2023 following the phased relocation of A102 carriageway in October. This work will take around two weeks to complete. Excavation, propping and micro piling are complete in 80% of the areas within the Open Cut section of works, (see fig 1. and 2.), as the tunnel approaches are being formed. Waterproofing and structural concrete works have commenced and will be undertaken within the core hours highlighted in the right-hand column.

Car Parks

Works for the rearrangement of the O2 Car Park One facilities have commenced. This work includes drainage, highway construction and surfacing in several phases and will complete in mid-2024.

Highways

Works on the new alignment of Tunnel Avenue are underway. The existing vehicle, cyclist and pedestrian routes will be maintained at all times, but the MV 108-bus stop has been removed.

The next **Community Liaison Group meeting** will be held on Tuesday 19 September at 18.00 in person at our Greenwich offices and on MS Teams, with the last session of the year scheduled for Tuesday 05th December. If you would like to attend, please get in touch via the helpdesk contact details in the right-hand column.

Working Hours

- Core hours: Mondays to Fridays: 08:00 to 18:00; Saturdays: 08:00 to 13:00.
- Extended hours: Mondays to Fridays: 18:00 to 22:00; Saturdays: 13:00 to 22:00 Sundays: 08:00 to 18:00
- Night Shift hours*: Mondays to Fridays: 22:00 to 08:00

*Will only be utilised when required.

What to expect?

- Construction workers and vehicles moving in and around the site
- Some noise and vibration may be experienced during working hours
- Traffic Management will be in place to indicate any lane closures
- Due to on-going works on the A102, please plan your journeys and check before you travel

Any questions?

Please get in touch:

Email: help@riverlinxcjv.co.uk

24/7 Helpdesk: 079 079 784 86

Website: www.riverlinx.co.uk/news



Follow us on:



www.linkedin.com/company/riverlinx



www.twitter.com/RiverlinxCJV