

Information Sheet - Silvertown Works

Riverlinx CJV are working on behalf of Transport for London to construct the Silvertown Tunnel.

What are we doing?

As works progress in all areas of our Silvertown site, we continue to build the new road alignment which will tie the existing infrastructure into the new tunnel and requires the enlargement of the Tidal Basin roundabout. The completion of cross passage excavation and waterproofing marks the end of tunnelling. The steel framework of the Portal building is complete and cladding work has commenced. Following the dome installation in the 'cut and cover' section of tunnel, see fig.1 below, both utilities fit out works and highways works have started within the tunnel. Please find further details below for activities this quarter.

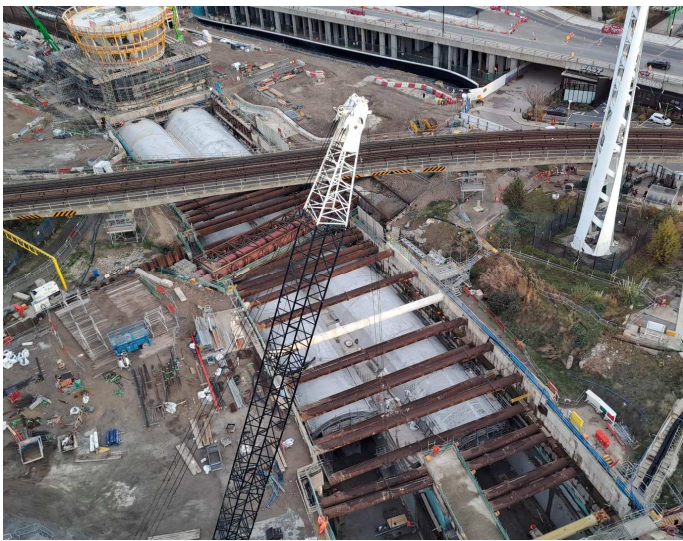


Fig.1 Roof of the Cut and Cover Tunnel Prior to last pour

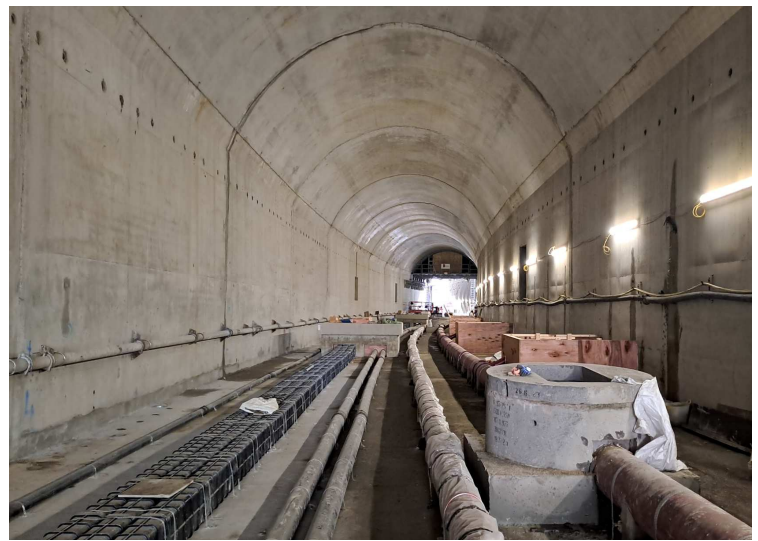


Fig.2 Highway Construction within the 'Cut and Cover' Tunnel Silvertown

Blackwall Tunnel (A102) weekend full closures (Southbound)

To facilitate the reconstruction of the existing A102 carriageway there will be five full weekend closures to install drainage and over-height vehicle gantries on the following dates:

From midnight, Friday 12 January to Monday 15 January 05:00

From midnight, Friday 19 January to Monday 22 January 05:00

From midnight, Friday 26 January to Monday 29 January 05:00 (a contingency weekend if either of the previous two weekends are not possible)

From midnight, Friday 09 February to Monday 12 February 05:00

From midnight, Friday 23 February to Monday 26 February 05:00

For full details, please see the TfL Press Release at: www.riverlinx.co.uk/news

Lower Lea Crossing

In mid-January the Lower Lea Crossing traffic management will be altered and the contraflow removed, with single lane traffic on each carriageway. This will enable works to continue in the central reservation for the installation of vehicle restraint barriers.

The southern end of the new Tidal Basin roundabout will be returned to the confines of the site boundary, within the hoarding, to allow the next phase of construction to take place, connecting the tunnel eyes (entrance underground) to the tunnel approach (above ground).

A semi-permanent pedestrian and cycle crossing will be operational during the road reconfiguration. Please refer to the map on the Riverlinx website for further details and future updates: www.riverlinx.co.uk/traffic-management

‘Cut and Cover’ Tunnel

At the south end of the Cut and Cover, the Retrieval Chamber and Launch Shafts are slowly being filled with slabs and walls as the team work to close the gap between these works and the bored tunnel rings. The structure of the Cut and Cover itself is completed – refer to fig. 1. and is now being fitted out with the utilities that will sit within the highway – refer to fig. 2.

Tunnel approach – ‘Open Cut’

The ‘Open Cut’ section, fig.3 below, is the stretch of road that will bridge the gap between the Silvertown Tunnel and the Tidal Basin Roundabout. It will consist of two lanes of traffic each way. The base slab which the new road will be laid upon is complete, and the construction of walls is ongoing.



Fig.3 Open cut construction

North Portal Building

The North Portal building is being built above the entrance to the tunnel, and it is from here that the tunnels will be managed once operational. The steel framework is complete and cladding work has commenced. See fig.4 below. The scaffold is to allow the copper façade to be installed to create the green appearance seen in fig. 5.



Fig.4 Portal building constructed with support buildings.

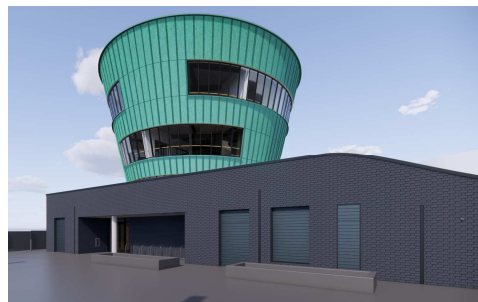


Fig. 5. CGI of the future Portal building

Community Liaison Group meetings (CLG)

The next CLG’ will be held on Tuesday 23 January at the slightly later time of 18:30 in the Britannia Village Hall, Evelyn Road. If you would like to attend, please get in touch by either calling or emailing the helpdesk contact details shown in the right-hand column. We hope to see you there.

- **Core hours:** Mondays to Fridays: 08:00 - 18:00; Saturdays: 08:00 - 13:00
- **Extended hours:** Monday to Friday: 07:00 – 22:00, Saturdays 07:00 – 19:00 (As and when required)
- **Night shift works:** Mondays to Saturdays: 22.00 - 08.00 (As and when required)
- **River wall extended hours:** Monday to Saturday 04:00 to 08:00 and 18:00 to 22:00 N.B. These hours will only be used if necessary.
- **Reinforced concrete construction** works below ground will extend into the night (in some areas) until May 2024.

Any questions?

Please get in touch:

Email: help@riverlinxcjv.co.uk

24/7 Helpdesk: 079 079 784 86

Website: www.riverlinx.co.uk/news



Follow us on:



www.linkedin.com/company/riverlinx



www.twitter.com/RiverlinxCJV

TfL have launched a consultation on proposed walking and cycling improvements on Lower Lea Crossing. For more information, please visit: haveyoursay.tfl.gov.uk/lower-lea-crossing